

Waterproof Test Chamber

Model:IN-IPX56-125L

Product Description:

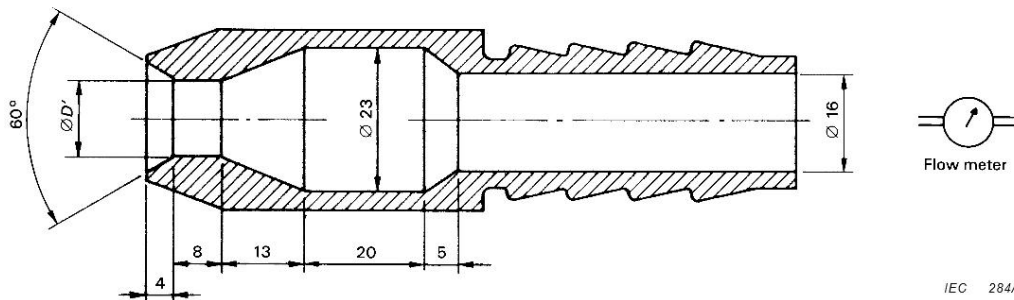
Waterproof test machine is to test water resistance and other related properties of electronic and electrical products, lamps, electric cabinets, electrical components, automobiles, motorcycles and related parts and components under simulated climatic conditions. To verify whether the performance of the product meet the requirements.

Standard:

Waterproof tester is complied with IEC60529:1989 +A1:1999 +A2:2013 "Degrees of protection provided by enclosures (IP Code)", GB4208-2008"Enclosure Protection Level (IP Code)" 14.2.5, 14.2.6, GB7000.1.

Features:

1. Spray test equipment is suitable for IPX5, IPX6 rating test.
2. The outer housing of spray test machine is made of high-quality steel plate, and the surface is painted with baking varnish, which is good looking and durable.
3. Inner box, rotary table, swing pipe are made of SUS304# stainless steel to ensure long-term use without rust.
4. Box-type structure; self-contained water tank, circulating water; equip with water tank float valve to control water inflow automatically, with low water level alarm detector.
5. A transparent observation window (tempered glass material) on the door, and LED lighting inside of chamber for watching during testing.
6. IPX5&6: According to the specifications of IEC60529 (as shown below):



Dimensions in millimetres

D' = 6,3 for the test of 14.2.5 (second characteristic numeral 5)

D' = 12,5 for the test of 14.2.6 (second characteristic numeral 6)

Figure 6 – Test device to verify protection against water jets (hose nozzle)

7. Filtration measures: high-precision filter can effectively filter impurities in tap water; it can be replaced regularly.
8. Rotary Table Drive: Adopt high-quality stepper motor, speed and angle can be set on the touch screen (adjustable), accurate stepless adjustment within the standard range, and can automatically control the positive and reverse rotation (positive and reverse rotation: suitable for sample test with power to prevent winding).
9. Water jet test machine is equipped with a sample power socket. The sample power supply can be controlled by the program: power off (0-999min) - power-on (0-999min) - power off (0-999min), suitable for samples that need to be power on and power off alternatively during testing.

10. The test time of water jet tester can be set on the touch screen. The setting range is: 0-999min (adjustable).
11. The main control system adopts Taiwan Weilun 7-inch touch screen and Panasonic PLC. The electrical components adopt famous brands such as LS and Omron. The wiring process conforms to the requirements of national standards. The layout of the electric board is reasonable, the wiring is firm and the marking is clear.
12. Water jet test machine is equipped with an in-line spare parts box, which is supply with common spare parts (such as hex screwdriver, filter element, needle, etc.), which is convenient for users to keep and use.
13. The spray gun can swing up and down and table is rotating, it can achieve full spray on the sample surface.

Technical Parameters

Products	IPX5 IPX6 Waterproof Test Machine
Model	IN-IPX56-125L
Inner Size	L500*D500*H500mm
Outer Size	About L3300*D850*H1300mm(Include water conduit)
Max Loading Weight of Rotary Table	50KG
Testing Time	0-999 min
Diameter of spray hole	IPX5 is 6.3mm, IPX6 is 12.5mm
IPX5 spray flow	12.5±0.625L/min
IPX6 spray flow	100±5L/min
Water Pressure (Mpa)	Adjust according to the specified water flow
Fixing method of spray gun	Mechanical fixing
Equipment power supply	AC380V, three phase, 50Hz, 3.0KW
Sample power supply	AC220V, single phase, 50Hz, 10A
Safety function	Leakage protection, water shortage protection, short circuit protection

Temperature: 5°C~35°C; Relative Humidity: ≤85%; Air Pressure: 86kPa~106kPa

The following conditions are guaranteed by the user and the corresponding connection is completed:

- 1.The ground is level, ground and walls are waterproofed with floor drain or gutter, well ventilated;
- 2.Ground loading capacity is not less than 200kg/m²;
- 3.No strong vibration around the device;
- 4.No strong electromagnetic field around the device;
- 5.No flammable, explosive, corrosive substances and dust around the equipment;
- 6.Appropriate use and maintenance space is left around the equipment:
Rear side, left and right side, top of the equipment: 800mm; front side of equipment: 1200mm

Notes:

1. The user is required to configure the leakage protection switch of the corresponding capacity for the equipment at site, and the switch must be used independently for the device.
2. It is forbidden to use the knife switch or power socket.
3. The leakage protection air switch is not more than 2 meters away from the equipment.
4. The user is required to supply the water source for the equipment at site, the water pressure is not less than 0.2Mpa,and install 4 water distribution taps.
5. The position of the water faucet is no more than 2 meters away from the equipment.

● Appearance:

